

0.10 0 0 0 0 0.1 0.2 0.3 MI 0.4

200 0 0 200 400 M 600

Scale 1: 24981 Datum WGS84

Gain: 62 ft Loss: 63 ft



0.0 1.0 mi 2.0 mi 3.0 mi 4.0 mi 5.0 m

Cedar Niles Park - Columbine Trail
Olathe, KS





JOHNSON COUNTY
Park & Recreation
District

www.jcprd.com

**MOUNTAIN BIKE
SAFETY**

Riding bicycles on rough terrain trails is an inherently dangerous activity. Be Safe - Wear a helmet - It's Just Good Sense. Please report trail condition concerns to JCPRD Offices at (913) 438-7275.

TRAIL ETHICS

- 1. LEAVE NO TRACE.** Do not hike or ride on unpaved trails when conditions may cause you to leave evidence of your passing. Using trails during wet conditions will accelerate erosion and maintenance costs.
- 2. STAY ON EXISTING TRAILS.** Creating new trails or shortcuts negatively affects future users.
- 3. PACK OUT WHAT YOU PACK IN.** Litter along the trail decreases the enjoyment for all.
- 4. BE COURTEOUS OF WILDLIFE AND OTHER USERS.**
- 5. LEAVE NATURE WHERE YOU FIND IT.** Please leave the wildflowers for others to enjoy.

Legend

- Prairie Overlook
- Restroom
- Trail Marker

Trail Name

- Outer Hank 3.0 mi.
- Inner Hank 1.5 mi.
- Eddy Loop 1.6 mi.
- Paved Trail 4.0 mi.
- Hiking Trail 0.3 mi.
- Equestrian Trail 5.5 mi.
- Index Contour
- Park Boundary

0 400 800 1,600 2,400 3,200 Feet

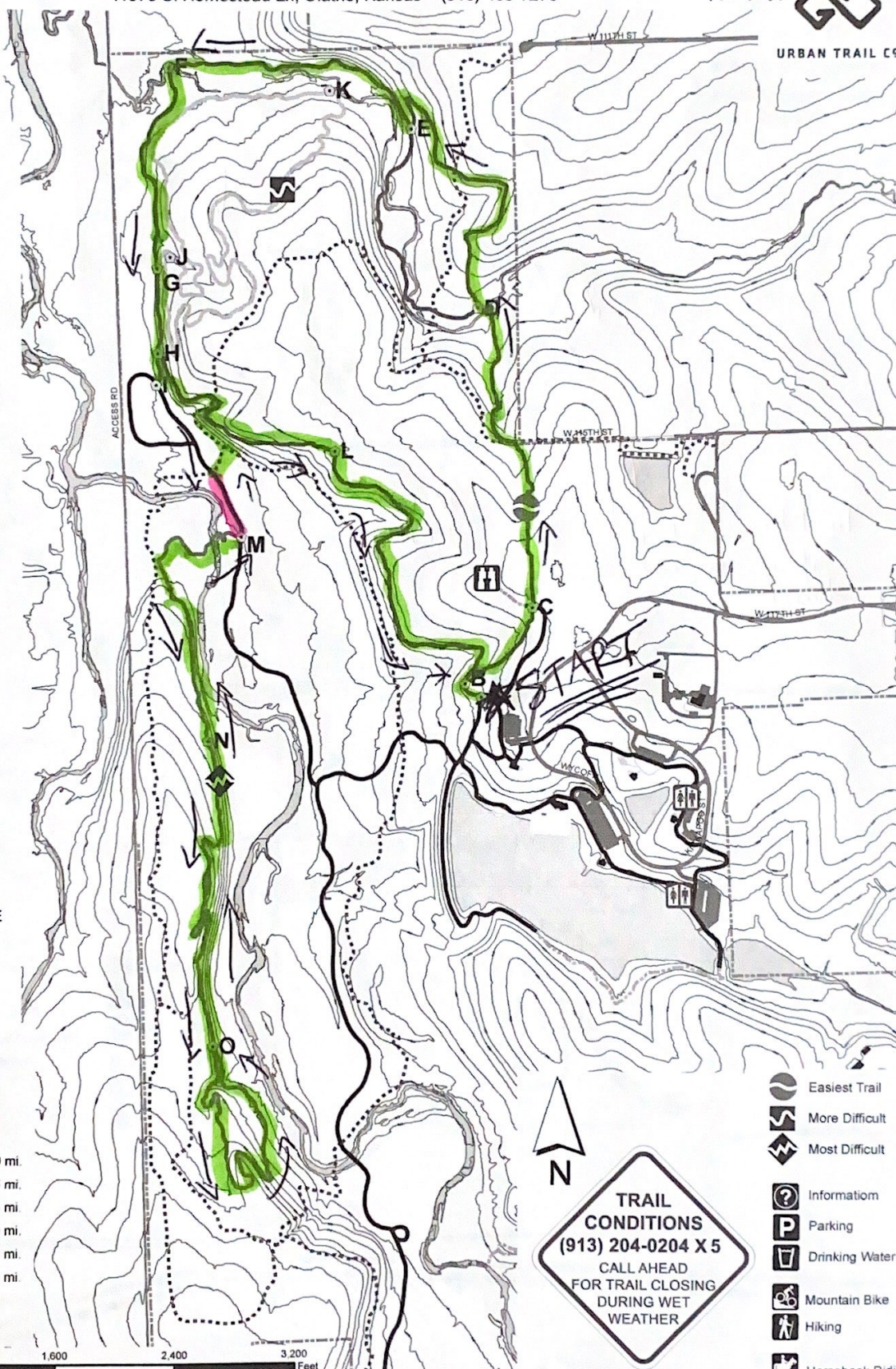
KILL CREEK PARK

11670 S. Homestead Ln, Olathe, Kansas (913) 438-7275

PINK = PAVED TRAIL
GREEN = SINGLE TRACK



URBAN TRAIL C9



**TRAIL
CONDITIONS**
(913) 204-0204 X 5
CALL AHEAD
FOR TRAIL CLOSING
DURING WET
WEATHER

- Easiest Trail
- More Difficult
- Most Difficult
- Information
- Parking
- Drinking Water
- Mountain Bike
- Hiking
- Horseback Riding

February 18, 2020



LEXINGTON LAKE PARK

9000 Sunflower Road, De Soto, Kansas 66018
(913) 438-7275

www.jcprd.com



JOHNSON COUNTY
Park & Recreation
District



June 26, 2020



JOHNSON COUNTY
Park & Recreation
District
www.jcpd.com

SHAWNEE MISSION PARK 7900 Renner Road, Shawnee, Kansas (913) 438-7275



Trails Map

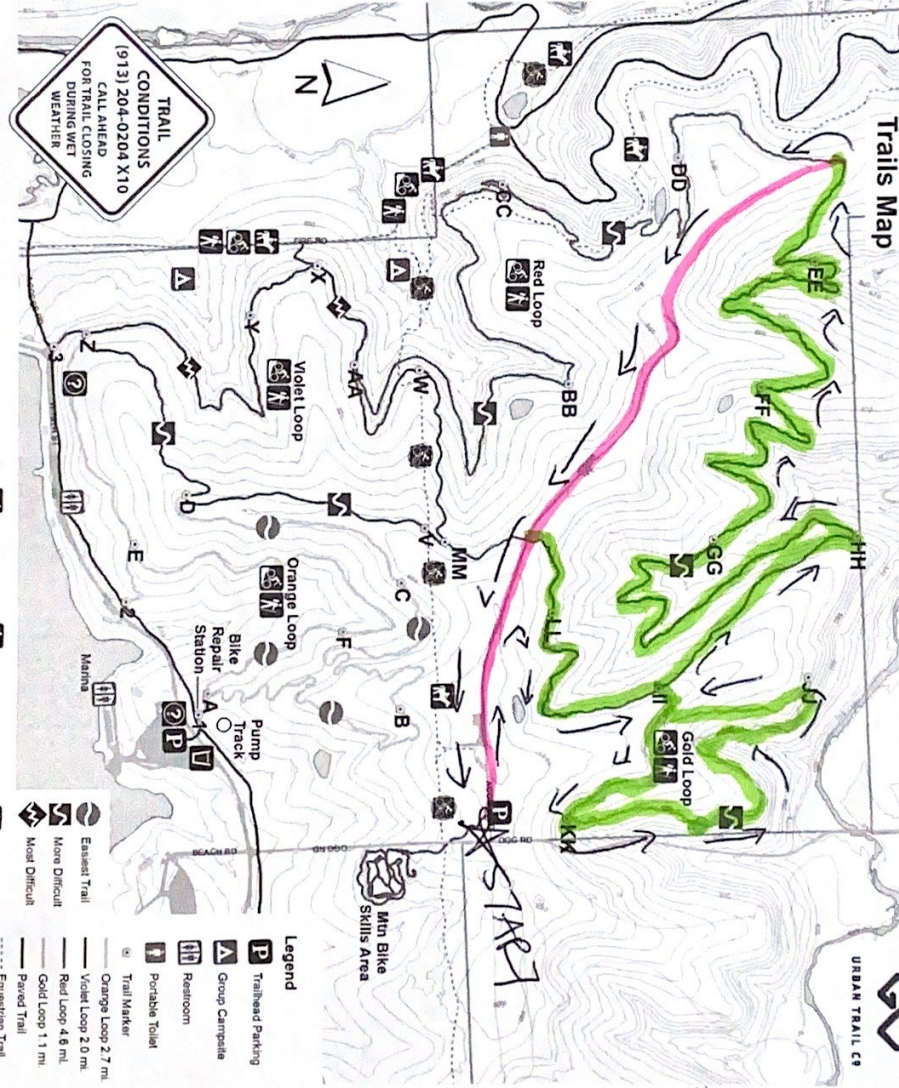
TRAIL SAFETY

Riding bicycles on rough terrain trails is an inherently dangerous activity. Be Safe - Wear a Helmet - It's Just Good Sense.

Please report trail condition concerns to JCPRD offices at (913) 438-7275

TRAIL ETHICS

- 1. LEAVE NO TRACE**
Do not hike or ride on unpaved trails when conditions may cause you to leave evidence of your passing. Using trails during wet conditions will accelerate erosion and maintenance costs.
- 2. STAY ON EXISTING TRAILS** Creating new trails or shortcuts negatively affects future users.
- 3. PACK OUT WHAT YOU PACK IN.** Litter along the trail decreases the enjoyment for all.
- 4. BE COURTEOUS OF WILDLIFE AND OTHER USERS.**
- 5. LEAVE NATURE WHERE YOU FIND IT.** Please leave the wildflowers for others to enjoy.



- Mountain Bike
- Hiking
- Horseback Riding
- No Bikes
- Information
- Drinking Water
- Equestrian Trail
- Elev Contour 10'
- Park Boundary

- Trailhead Parking
- Group Campsite
- Restroom
- Portable Toilet
- Trail Marker
- Orange Loop 2.7 mi
- Violet Loop 2.0 mi
- Red Loop 4.6 mi
- Gold Loop 1.1 mi
- Paved Trail

0 300 700 1,400 2,100 2,800 feet

February 12, 2021

TRAIL CONDITIONS
(913) 204-0204 X10
CALL AHEAD
FOR TRAIL CLOSING
DURING WET
WEATHER

Pink = gravel
green = single track

SHAWNEE MISSION PARK SOUTH

JOHNSON COUNTY
Parks & Recreation
Division

www.jcpr.com

Shawnee Mission
Park
South Shore Trail
7300 River Road
Shawnee, Kansas
(913) 638-7275

Legend

- Picnic Shelter
- Playground
- Basketball Court
- Tennis Court
- Soccer Field
- Baseball Field
- Golf Course
- Horse Park
- Dog Park
- Parking Lot
- Trailhead
- Trail Marker
- Trail Boundary
- Trail Type
- Trail Elevation
- Trail Distance
- Trail Difficulty
- Trail Season
- Trail Status



June 21, 2025

0 275 750 1100 Feet

TRAIL
CONDITIONS
(913) 254-0234 X20
CALL AHEAD
FOR TRAIL CLOSURES
DANGER, REPAIR
OR OTHER

Shawnee Mission Park South Shore Trail
is a famous hiking trail - prepare for the distance
you plan to hike - carry drinking water.
Shower & 50 Minute Cycles 5 miles
Round trip 5 miles

pink = road
crossing

SHAWNEE TRAIL 04

START

